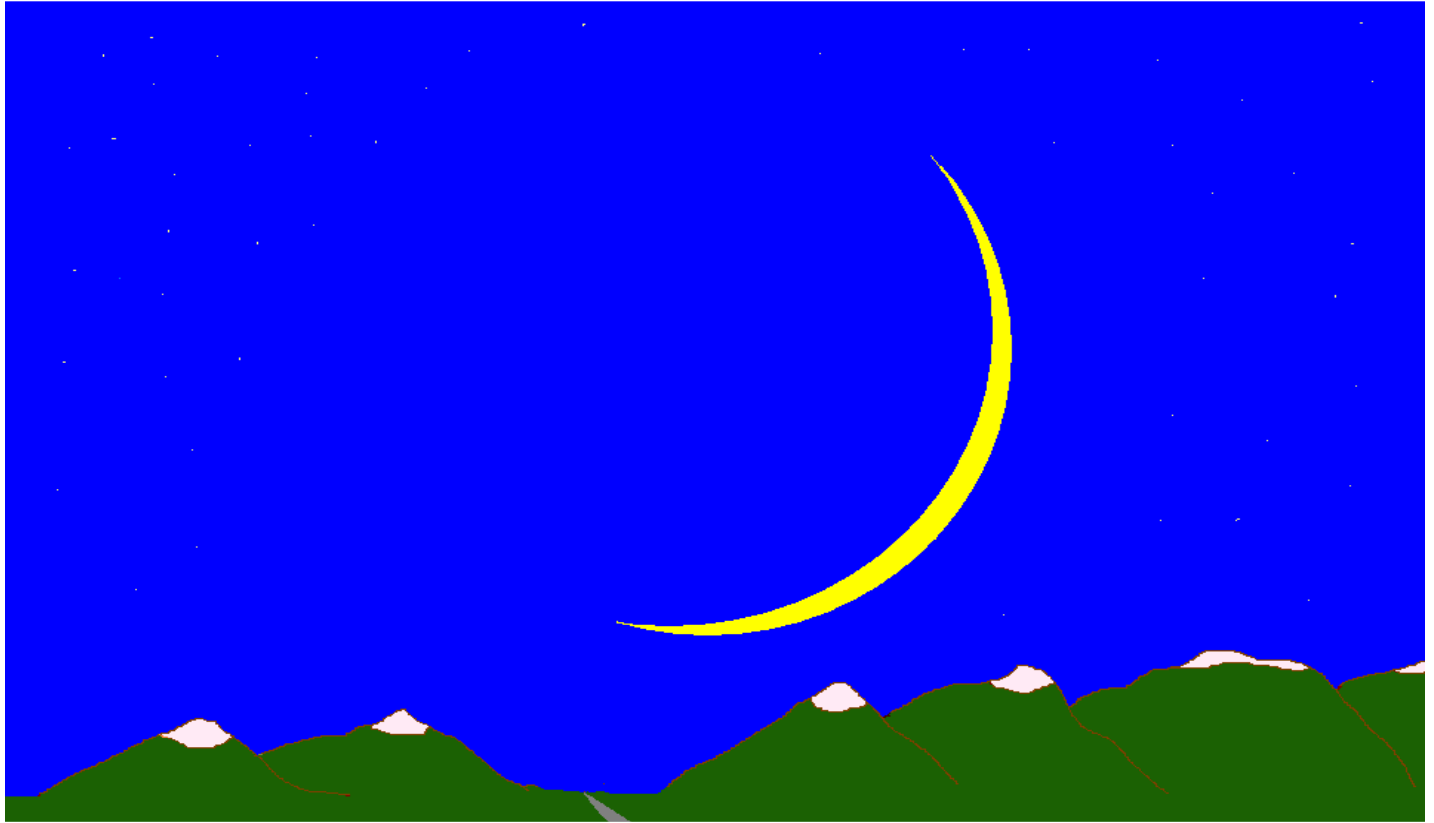


SOMETHING DIFFERENT:



LUNAR SABBATHS

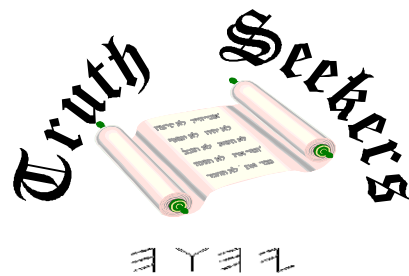
Sunday	Monday	Tuesday	Wednesday	Thursday	Friday	Saturday
	Fourth Sabbath of Previous Month (29th day of month)	“Conjunction Day” 30th day of previous month, (Not considered a day of the week)	1 New Moon Day (Not considered a day of the week)	2 Day one of work week (Sabbath this month will fall on a Wednesday)	3 Day two of work week	4 Day three of work week
5 Day four of work week	6 Day five of work week	7 Day six of work week	8 Day seven (first Sabbath of the month)	9 Day one of work week	10 Day two of work week	11 Day three of work week
12 Day four of work week	13 Day five of work week	14 Day six of work week	15 Day seven (second Sabbath of the month)	16 Day one of work week	17 Day two of work week	18 Day three of work week
19 Day four of work week	20 Day five of work week	21 Day six of work week	22 Day seven (third Sabbath of the month)	23 Day one of work week	24 Day two of work week	25 Day three of work week
26 Day four of work week	27 Day five of work week	28 Day six of work week	29 Day seven (fourth Sabbath of the month) ALSO: “Conjunction Day”	1 New Moon Day (Not considered a day of the week)	2 Day 1 of new month’s work week; Sabbath this month on a Thursday	3 Day two of work week

By Larry and June Acheson

SOMETHING DIFFERENT: LUNAR SABBATHS

By Larry and June Acheson

First Printing, 2002
Revised, Fall 2006
Latest Revision, Fall 2008



A Truth Seekers Publication

seekutruth@aol.com